

colombianorganics 

2023-2024 STRAIN & PRODUCT CATALOG
PHARMACEUTICAL GRADE THC FLOWER
FEMINIZED SEEDS & CLONES
CBD FLOWER



“ We are working on becoming the market reference for the highest quality certified cannabis genetics , focusing on the selling and licensing of THC and CBD strains, while producing and exporting the best craft cannabis flowers from Colombia to the world ”

Top Legal & Certified cannabis genetics. Organic, hydroponic, sun grown, sustainable pharma grade flower. Find us worldwide.

GENETICS

Feminized seeds and Clones

Official denomination of origin
Official phytosanitary certificates

Distribution Centers:

- USA
- United Kingdom
- Thailand
- Colombia
- Uruguay (soon)
- Switzerland (soon)

THC FLOWER

Organic Pharma Grade THC Flower

GACP compliant: Available
GACP certified: Available
EU-GMP certified: Soon

Distribution Centers:

- Germany: Soon
- Colombia

CBD FLOWER

Craft Colombian flower

Hand trimmed
Cured
Official phytosanitary certificates

Distribution Centers:

- Switzerland
- Colombia

SOME OF THE SEED BANKS & BREEDERS WE WORK WITH



COLOMBIAN ORGANICS PHARMA GRADE THC FLOWER

**A more natural approach to cannabis
2023 - 2024 strains**

Sun grown, craft, hand trimmed cannabis flowers

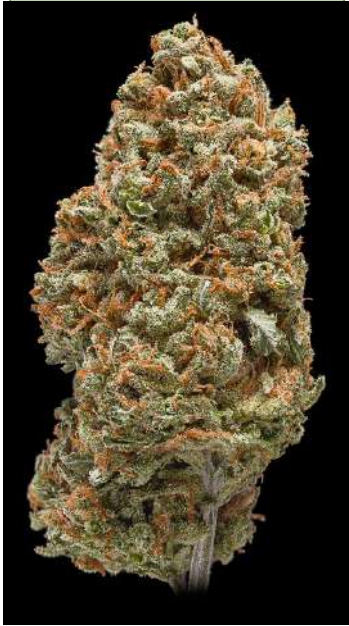
Enhanced terpene content

Organic & hydroponic clean production model

No Pesticides

Low Energy consumption

Produced in carbon neutral operations



Langui Kush
Pharma Grade Flower
THC 23%-25%
50 KG Available



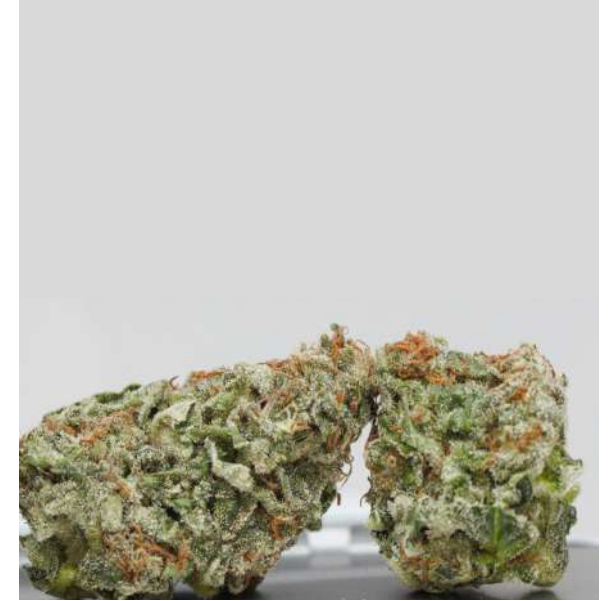
Langui Kush
Pharma Grade Flower
THC 16%-18%
70 KG Available



Jack Attack
Pharma Grade Flower
THC 23%-26%
+25 KG Available



Royal Glue
Pharma Grade Flower
THC 21%-23%
+25 KG Available



Lemon Sorbet
Pharma Grade Flower
THC 22%-25%
+25 KG Available

Flower complies with European Pharmacopeia Quality Standards
GACP certified & GMP compliant
Organic & Hydroponic
Greenhouse premium Sun Grown flower
Enhanced terpene profile*
Official certificate of origin
Official phytosanitary certificates for exports
Photos from plants grown in greenhouse controlled environment





Super Lemon Haze

Pharma Grade Flower

THC 14%-18%

+250 KG Available

White Widow

Pharma Grade Flower

THC 13%-16%

+150 KG Available

Flower complies with European Pharmacopeia Quality Standards
GACP certified & GMP compliant
Organic & Hydroponic
Greenhouse premium Sun Grown flower
Enhanced terpene profile*
Official certificate of origin
Official phytosanitary certificates for exports
Photos from plants grown in greenhouse controlled environment





Chocolope

Pharma Grade Flower

THC 19%-22%

Available **NOW**

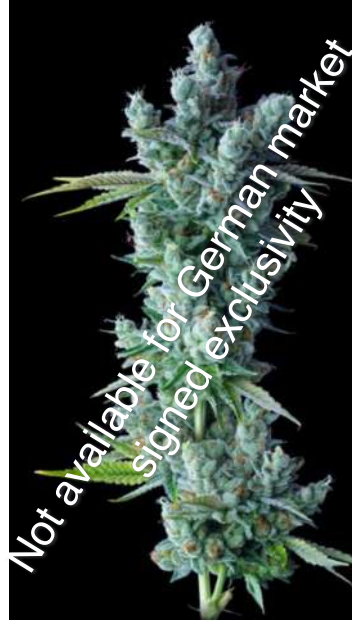


Holy Grail Kush

Pharma Grade Flower

THC 18%-23%

Available **NOW**



Kosher Dawg

Pharma Grade Flower

THC 17%-21%

Available **NOW**



Skywalker

Pharma Grade Flower

THC 18%-23%

Available **NOW**



Clifford

Pharma Grade Flower

THC 18%-21%

Available **NOW**



Cough Drops

Pharma Grade Flower

THC 6%-CBD 11%

Available **NOW**

Flower complies with European Pharmacopeia Quality Standards

GACP compliant

Organic & Hydroponic

Greenhouse premium Sun Grown Flower

Enhanced terpene profile*

Official certificate of origin

Official phytosanitary certificates for exports

Photos from plants grown in greenhouse and non controlled environment. 2 Weeks before harvest. Temp: 6° C (43 °F) - 24° C (75 °F) RH: 40%-90% (Daily)

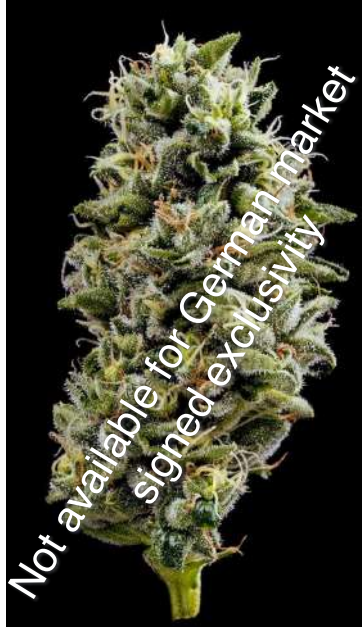


Banana OG

Pharma Grade Flower

THC 18%-22%

Available **NOW**

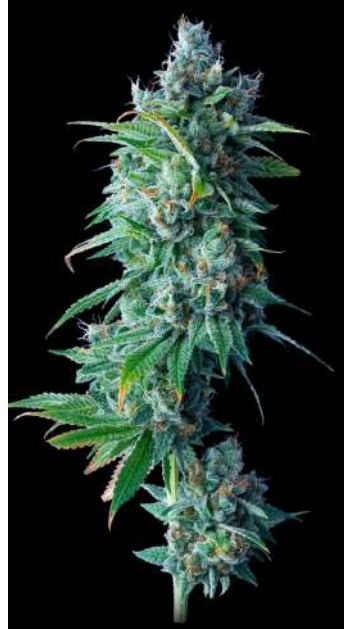


Snack Pack

Pharma Grade Flower

THC 17%-21%

Available **NOW**



24K Gold

Pharma Grade Flower

THC 18%-21%

Available **NOW**



New # 24

Pharma Grade Flower

THC 19%-21%

Available Q3 2023

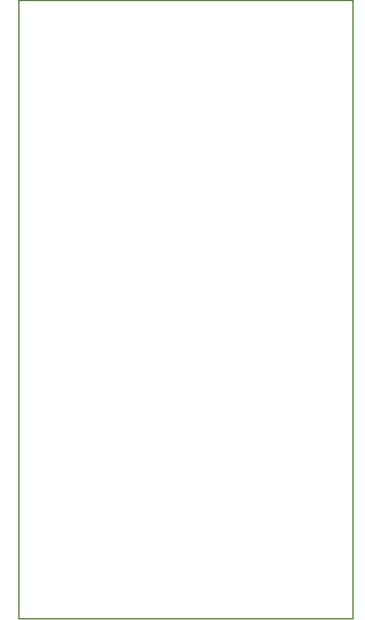


New # 31

Pharma Grade Flower

THC 17%-22%

Available Q4 2023



New # 39

Pharma Grade Flower

THC 19%-21%

Available Q4 2023

Flower complies with European Pharmacopeia Quality Standards
GACP compliant
Organic & Hydroponic
Greenhouse premium Sun Grown Flower
Enhanced terpene profile*
Official certificate of origin
Official phytosanitary certificates for exports
Photos from plants grown in greenhouse and non controlled environment. 2 Weeks before harvest. Temp: 6° C (43 °F) - 24° C (75 °F) RH: 40%-90% (Daily)



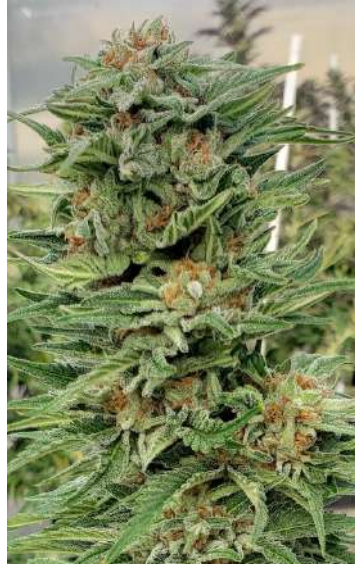
SIP#CO-SV01

Pharma Grade Flower

THC 20%-21%

CBG > 0,8%

Available Q4 2023



SIP#CO-SV03

Pharma Grade Flower

THC 19%-21%

CBG > 1,5%

Available Q4 2023



SIP#CO-SV04

Pharma Grade Flower

THC 18%-20%

CBG > 2%

Available Q4 2023



SIP#CO-SV05

Pharma Grade Flower

THC 16%-18%

CBG > 1%

Available Q4 2023



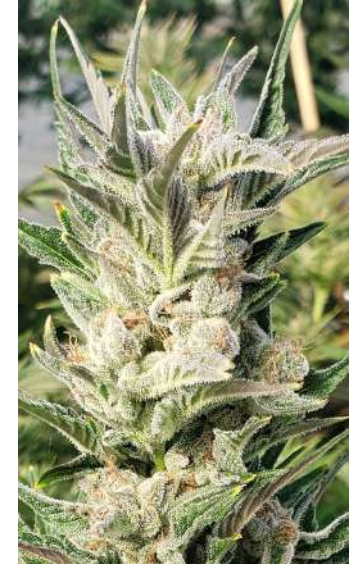
SIP#CO-SVB4.1

Pharma Grade Flower

THC 17%-20%

CBG > 1%

Available Q4 2023



SIP#CO-SV8B

Pharma Grade Flower

THC 17%-19%

CBG > 0,5%

Available Q4 2023

Flower complies with European Pharmacopeia Quality Standards

GACP compliant

Organic & Hydroponic

Greenhouse premium Sun Grown Flower

Enhanced terpene profile*

Official certificate of origin

Official phytosanitary certificates for exports

Photos from plants grown in greenhouse and non controlled environment. 2 Weeks before harvest. Temp: 6° C (43 °F) - 24° C (75 °F) RH: 40%-90% (Daily)



CATARACT CAKE

Pharma Grade Flower

THC 24%-27%

Available Q1 2024



BANANA SORBET

Pharma Grade Flower

THC 22%-26%

Available Q1 2024



DNA CAKE

Pharma Grade Flower

THC 23%-27%

Available Q1 2024



KOSHER PIE

Pharma Grade Flower

THC 24%-28%

Available Q1 2024

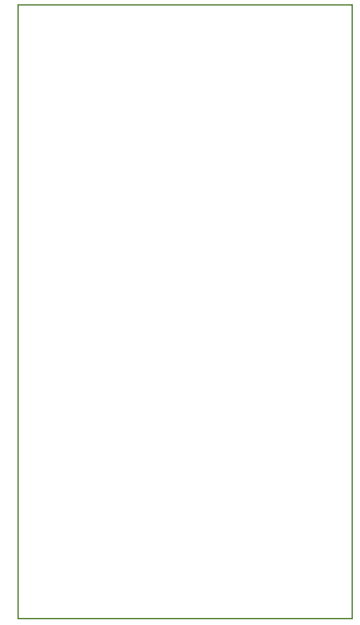


MISS DNA

Pharma Grade Flower

THC 23%-28%

Available Q1 2024



SIP#DNA31

Pharma Grade Flower

THC 24%-28%

Available Q1 2024

Flower complies with European Pharmacopeia Quality Standards

GACP compliant

Organic & Hydroponic

Greenhouse premium Sun Grown Flower

Enhanced terpene profile*

Official certificate of origin

Official phytosanitary certificates for exports

Photos from plants grown in greenhouse and non controlled environment. 2 Weeks before harvest. Temp: 6° C (43 °F) - 24° C (75 °F) RH: 40%-90% (Daily)



LEMON CHERRY G

Pharma Grade Flower

THC ___%-___%

Available Q4 2023



GIRL SCOUT COOK.

Pharma Grade Flower

THC ___%-___%

Available Q4 2023



WHITE RUNTZ

Pharma Grade Flower

THC ___%-___%

Available Q4 2023



GRAPE GAS

Pharma Grade Flower

THC ___%-___%

Available Q4 2023



JETFUEL OG

Pharma Grade Flower

THC ___%-___%

Available Q4 2023



APPLES & BANANAS

Pharma Grade Flower

THC ___%-___%

Available Q4 2023

Flower complies with European Pharmacopeia Quality Standards

GACP compliant

Organic & Hydroponic

Greenhouse premium Sun Grown Flower

Enhanced terpene profile*

Official certificate of origin

Official phytosanitary certificates for exports

Photos from plants grown in greenhouse and non controlled environment. 2 Weeks before harvest. Temp: 6° C (43 °F) - 24° C (75 °F) RH: 40%-90% (Daily)



RS 11

Pharma Grade Flower

THC ___%-___%

Available Q4 2023



GLITTER BOMB

Pharma Grade Flower

THC ___%-___%

Available Q4 2023

Flower complies with European Pharmacopeia Quality Standards

GACP compliant

Organic & Hydroponic

Greenhouse premium Sun Grown Flower

Enhanced terpene profile*

Official certificate of origin

Official phytosanitary certificates for exports

Photos from plants grown in greenhouse and non controlled environment. 2 Weeks before harvest. Temp: 6° C (43 °F) - 24° C (75 °F) RH: 40%-90% (Daily)

Join us as we become the regional reference in the market for certified cannabis genetics and pharma grade flower products of the highest quality, consistency and traceability.

CONTACT US GLOBALLY

mobile / whatsapp: +57 300 1903517

sales@colombianorganics.com

www.colombianorganics.com

colombianorganics 